

PART OF THE E 1/2 OF SEC. 32, T.7N., R.2W., S.L.B. & M.

PLAIN CITY
BLOCK 5, PLAT A

TAXING UNIT: 21, 296

SCALE 1" = 50'

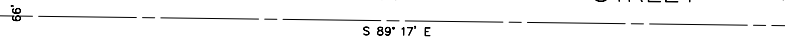
SEE PAGE 32

8

2350

NORTH

STREET



WEST STREET

WEST STREET

PLAIN CITY CORPORATION OF THE
CHURCH OF JESUS CHRIST OF
LATTER DAY SAINTS
240290004
TU 296

PLAIN CITY CORPORATION OF THE
CHURCH OF JESUS CHRIST OF
LATTER DAY SAINTS
240290005
TU 296

SEE PAGE 28

SEE PAGE 30

4

PLAIN

N 0° 2' 30" E

426'

C.B.D.

5

REDEVELOPMENT

426'

PROJECT

6

4425

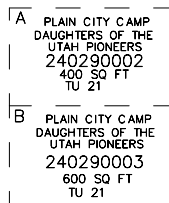
4350

LORI P ANDERSON
240290008
15,148 SQ FT
TU 21

KURT K CHRISTENSEN
& WF CELESTE
240290007
17,450 SQ FT
TU 21

TODD MONTGOMERY
240290006
12,091 SQ FT
TU 21

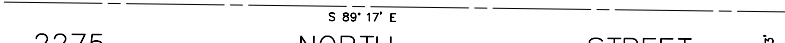
PLAIN CITY CORPORATION OF THE
CHURCH OF JESUS CHRIST OF
LATTER DAY SAINTS
240290001
TU 21



2275

NORTH

STREET



SEE PAGE 26

2

SEE ORIGINAL DEDICATION
PLAT OF PLAIN CITY IN
BOOK 5, PAGE 80 OF RECORDS.